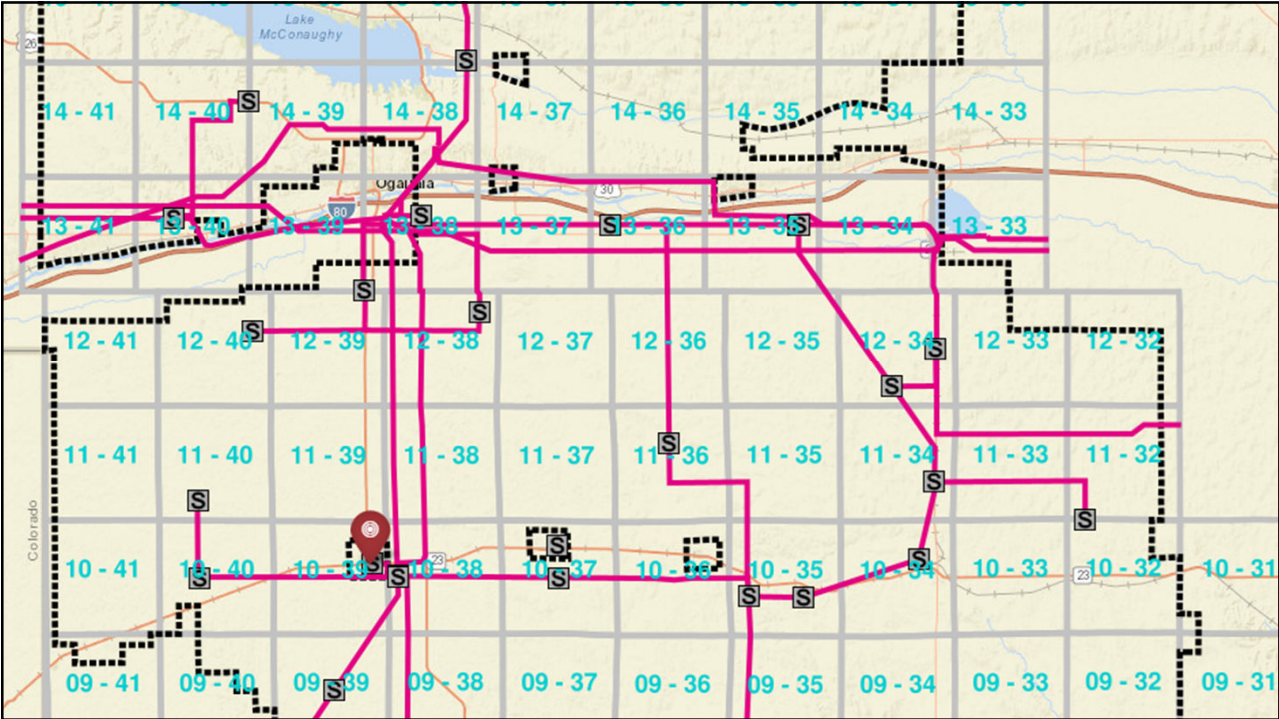




1



2

## Rebuild 69 kV Transmission Line Grant Substation to Red Willow Substation

- Originally built in the 1960s
- “H structure” construction – two poles per structure
  - Long spans – 650 to 950 feet is common
  - Conductor deteriorating due to age

3



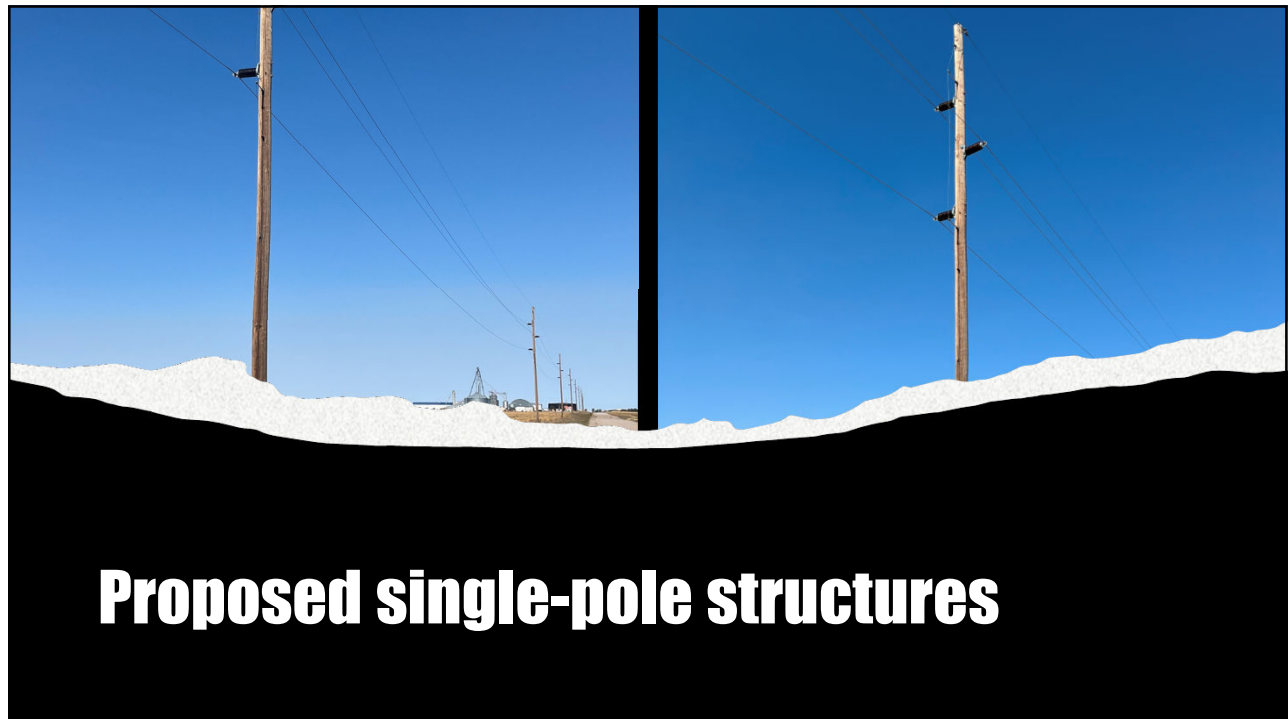
**Existing H-structure line**

4

## Rebuild 69 kV Transmission Line Grant Substation to Red Willow Substation

- Rebuilt with single-pole structures
- Each pole supporting less conductor (less weight)
- Line held tighter – less chance to slap together
- Less intrusive into property

5



6



ICF Tech

**GDO**  
GRID DEPLOYMENT OFFICE

Grid Resilience and Innovation Partnerships (GRIP) Program  
Applicant Informational Webinar

February 8, 2024

**United States Department of Energy  
Grid Resilience and Innovation Partnerships**

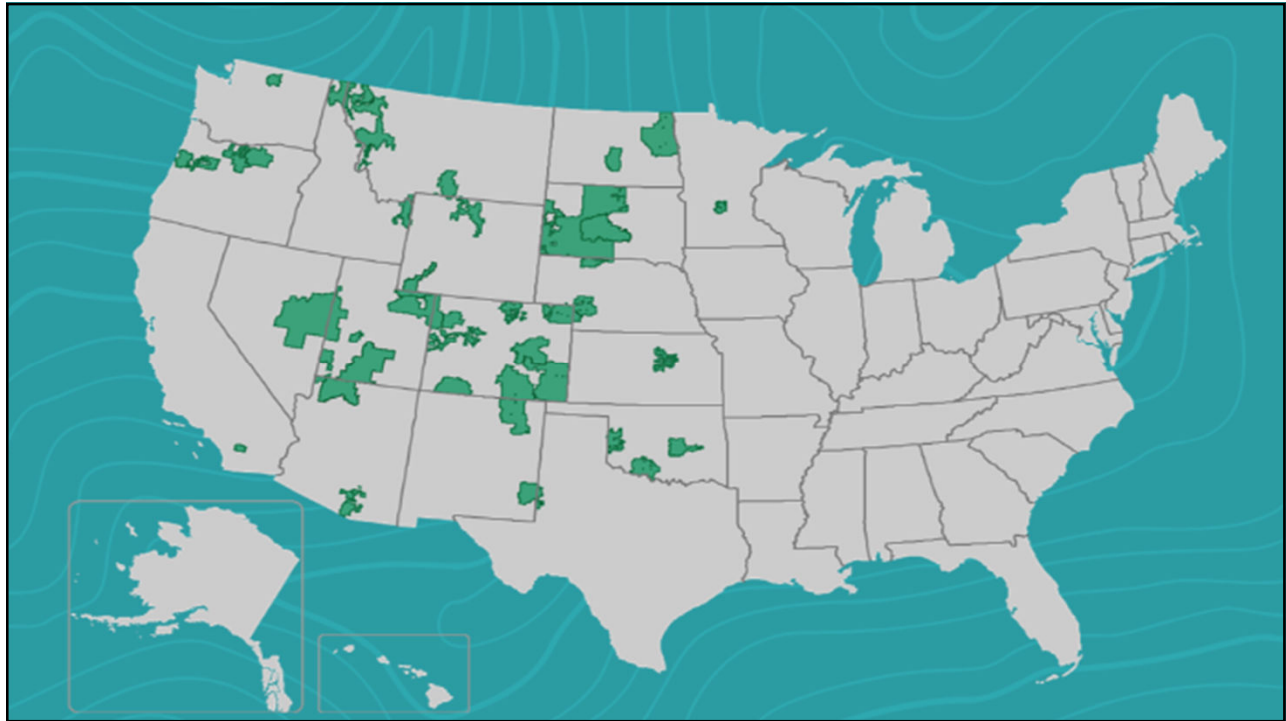
7

## **National Rural Electric Cooperative Association Wildfire Assessment and Resilience for Networks**

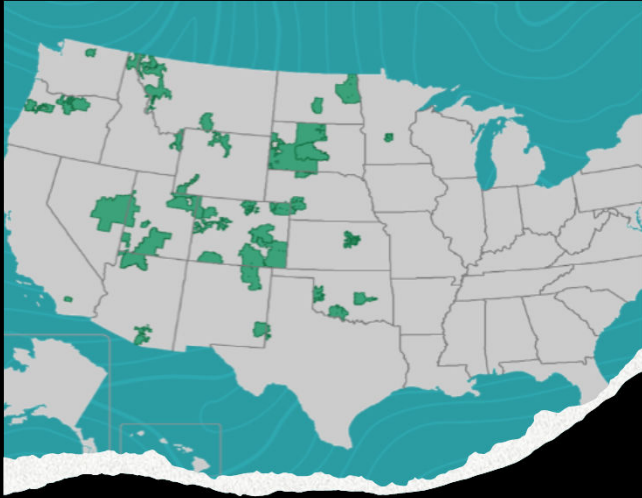
Grid Resilience Utility and Industry Grants support activities that will modernize the electric grid to reduce impacts due to extreme weather and natural disasters. This program will fund comprehensive transformational transmission and distribution technology solutions that will mitigate multiple hazards across a region or within a community, including wildfires, floods, hurricanes, extreme heat, extreme cold, storms, and any other event that can cause a disruption to the power system. This program provides grants to electric grid operators, electricity storage operators, electricity generators, transmission owners or operators, distribution providers, and fuel suppliers.



8



9



### NRECA Research's WARN Consortium

- Requested over \$99M
- Projects total >\$145M
- Midwest requested \$3M
- Estimated cost \$4M

10

## Proposed Timeline

- Tonight – Community Partnership Team meeting
- Fall 2024 – Begin design work
- Summer 2025 – Bid & Order materials
- Summer 2025 – Bid & Select Contractor
- Fall 2025 – Begin Construction

11

## How can you help with this project?

- Community Benefits Plan
- NRECA specified Community Partnership Teams
  - Facilitate Outreach, Involvement and Support
  - Advise throughout the project
  - Raise any concerns
  - Identify potential grid-related wildfire threats



12